



Water sustains life,
ours sustains a lifestyle.



Water Dispensers and Filtration Solutions

Product Guide 2025



Contents:

1. Water Dispensers
2. Water Filters
3. Scheduled Services
4. Emerging Trends
5. Equipment Selection Form.

Water Cooling Solutions

Freestanding Water Coolers
Counter Top Water Coolers

Free Standing – Pure Water Coolers

PWC5280

PWC5280-W (White)



PWC5280 - Commercial 2-Temp Point-of-Use dispensers

- Two temperatures – **Hot** and Cold (PWC 5281 is Cool/Cold)
- Tomlinson dispensing valves (made in USA)
- Uses high-quality Panasonic or LG compressor
- G.A. Murdoch tubing (USA)
- Food-Grade 304 stainless steel hot and cold tanks
- Dual mechanical floats insure shut-off when full
- No electronics or solenoid to service
- Can be converted from bottle-less to bottled in the field
- No-dribble Easy-Lever faucets with hot safety lever
- 8.5" fill area allows larger cups, mugs or reusable bottles
- Removable drip-tray is dishwasher safe
- One-piece blow-molded high-density polyethylene cabinet that is scratch, dent and UV resistant for long life
- Available in Back or White
- Meets Energy Star 2.0 requirements

Specifications

Weight: 33 lb. .
Dimension: 12.5" W x 13" D x 37" H
Cold tank volume 1 gal
Hot tank volume .32 gal
Cooling Rate: 1.5 gal/hr 37-50 °F

Heating Rate: 1.3 gal/hr 180 °F
Voltage: 115 VAC
Power Required: 600w max
Meets Energy Star Requirements
ADA compliant

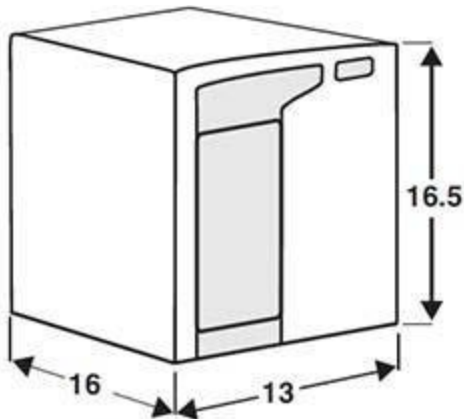


Vertex Water Products CF-5280.1

Counter Top - Vertex PureChill PWC450



The newest VERTEX Pure Water Coolers uses PureChill™ Technology to eliminate the need for an open reservoir for cold water storage. This hot and cold bottle-less water cooler closed system keeps environmental contaminants out so there is no need for costly in-tank sanitization. The water is safely dispensed directly to your cup.



Dimensions (inches)

PureChill™ Technology

No need for expensive UV and Ozone in tank sanitizers Integrated Filter Monitor ensures freshly filtered water

ProTekk™ Auto Safety-Shut-Off Valve provides peace of mind

Two temperature system

Cold: 37-50° F, Adjustable - Hot: 180° F Autocontrol

LED indicator for Hot and Cold water on the front panel

Larger fill opening allows larger cups or reusable bottles

Hygienic dispensing touch pad control with no-touch dispensing faucet

Easy to clean control panel

Individual on/off control switches for cold and hot water on rear panel

Multi-Function Drink Stations

Water Cooling and Filtration units featuring;

*Sparkling Water

ION – 904 Water Station

<https://vimeo.com/131686986>

- 1** **InstaChill™** 

Every glass is freshly filtered and instantly chilled in a Sealed Water Pathway, where air never contacts the water supply. Unlike other coolers, ION's proprietary design has no reservoir to clean or sanitize.
- 2** **Cooling Capacity**

Dispense a 7 ounce glass of water every 30 seconds, for an hour... and ION makes sure it's 42°F or colder. No other cooler even comes close.
- 3** **RapidHot™** 

Tea, cocoa, and even instant soups are delicious with piping hot, freshly filtered water. Up to 2 gallons per hour, convenient and ready whenever you are.
- 4** **Sparkling Water Option** 

Indulge your healthy lifestyle with the healthy alternative to soft drinks. Perfect with juice, a twist of lemon or lime, or try SPLASH™ flavorings from Natural Choice.
- 5** **Pure Alert Filter Monitor**

Now you know when to change your filters. Indicator lights switch from green to red when filter change is required. Filters should be replaced every 6-12 months depending on local water supply.
- 6** **Save Energy**

Why run an appliance when the building is empty? ION's SleepMode™ reduces energy consumption on evenings and weekends.



- 7** **Compact Size**

ION fits anywhere, from your kitchen counter to a university cafeteria.
 - 8** **9" Dispensing Height**

Easily fill cups, carafes, coffee pitchers, and water bottles.
 - 9** **Hygienic Design**

From the Sealed Water Pathway, ION dispenses your freshly filtered water from an easily replaceable faucet.
 - 10** **Childlock**

Requires hidden button to dispense hot water (user settable).
 - 11** **Removable Drip Tray**

Easy to clean and dishwasher safe. Also available in larger capacity, and with drain option.
 - 12** **Filter Changes in Seconds**

A simple twist to remove the CarbonPlus™ Filter, without any tools... even without turning off the water supply. CarbonPlus filter comes standard with all appliances, rated for 1500 gallons, reducing contaminants down to 0.5 micron.
- ION® Microprocessor Control**
 Proprietary software and precision sensors deliver exact temperature control and ensure high performance under extreme conditions.

Beverage Grade CO2 is sold separately and equates to about 1 cent per ounce when using the Soda Pro easy change cylinders, or .3 cents per ounce when using the 10lb cylinders. Co2 cylinders are replaced as needed. Only Soda-Pro and Approved ION Bulk Cylinders are licensed for use in the ION TS Water Systems.

ION – TS Water Station



1. InstaChill™

Every glass is freshly filtered and instantly chilled in a Sealed Water Pathway where air never contacts the water supply.

2. Cooling Capacity

Dispense an 8-ounce glass of water every 30 seconds, for an hour ... and ION makes sure it's 42°F or colder. No other cooler even comes close.

3. Rapidhot™

Tea, cocoa, and even instant soups are delicious with piping hot, freshly filtered water. Up to two gallons per hour, convenient and ready whenever you are.

4. Sparkling Water

Indulge your healthy lifestyle with the healthy alternative to soft drinks. Refreshing with juice, or a twist of lemon or lime.

5. Quick Filter Changes

A simple twist to remove the filter, without any tools ... even without turning off the water supply.

6. Energy Savings Mode

Why run an appliance when no one is using it? Schedule ION's Sleepmode™ to reduce energy consumption anytime, anywhere.

7. Touchscreen Technology

Easy to use Touchscreen allows users to customize settings, and provides maintenance reminders.

8. SodaPro Regulator

Optional feature for easy to change CO2 supply. Provides up to 250 8-ounce glasses.

ION Microprocessor Control

Proprietary software and precision sensors deliver exact temperature control and ensure high performance under extreme conditions.



Beverage Grade CO2 is sold separately and equates to about 1 cent per ounce when using the Soda Pro easy change cylinders, or .3 cents per ounce when using the 10lb cylinders. Co2 cylinders are replaced as needed. Only SodaPro and Approved ION Bulk Cylinders are licensed for use in the ION TS Water Systems.



DOZENS OF STILL & SPARKLING FLAVORS

Choose your favorite from peach tea to coconut, and many from your favorite brands like AriZona.

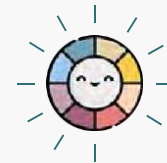
Healthily hydrate: zero to low sugar, no artificial preservatives and many flavors have vitamins and minerals to keep you performing your best.

**Alpine
Start.**



**.SUPER.
NATURALS
BY
LAVIT**

EBOOST



SAFETY FIRST

Automatic self sanitizing, Lavit set a new standard for beverage dispensers.

Lavit is made with antibacterial and antimicrobial materials, reducing the risks of standing water.



SPACE SAVING

Lavit's flavors come in compact, 100% recyclable aluminum EcoCaps, each takes 5X less space than packaged drinks. That means more shelf space and more flavor. It's a win-win.





CELSIUS



This signature rich, juicy flavor of oranges comes with B and C vitamins, Green Tea Extract, and Guarana Seed Extract for extra energy!

LAVIT ORIGINALS



Need a boost? Say goodbye to gross and harsh energy drinks and hello to renewable energy! Full of vitamins and minerals to keep you going.

EBOOST ↗



Amp your focus with a delicious mix of vitamins, electrolytes, antioxidants, nootropics, and natural caffeine. With 100% daily value of D, B12 and Zinc, you will feel the difference.

Get dozens of flavors on tap. Now available from Lavit.



Hi, I'm Bevi

The smart water cooler—bringing flavors, fizz, and eco-friendly fun to your workplace.



Still or sparkling?

Bump up the bubbles or stick with the classic. Choose from still, light sparkling, or sparkling for the right amount of fizz.

We're hot and we're cold

Select the temperature you're in the mood for—cold, ambient, or hot. Try hot water to make tea, then come back for a cold glass of sparkling water.

Top it off with an enhancement

Add up to 2 enhancements, like Immunity or Caffeine, into every beverage.

What's your flavor?

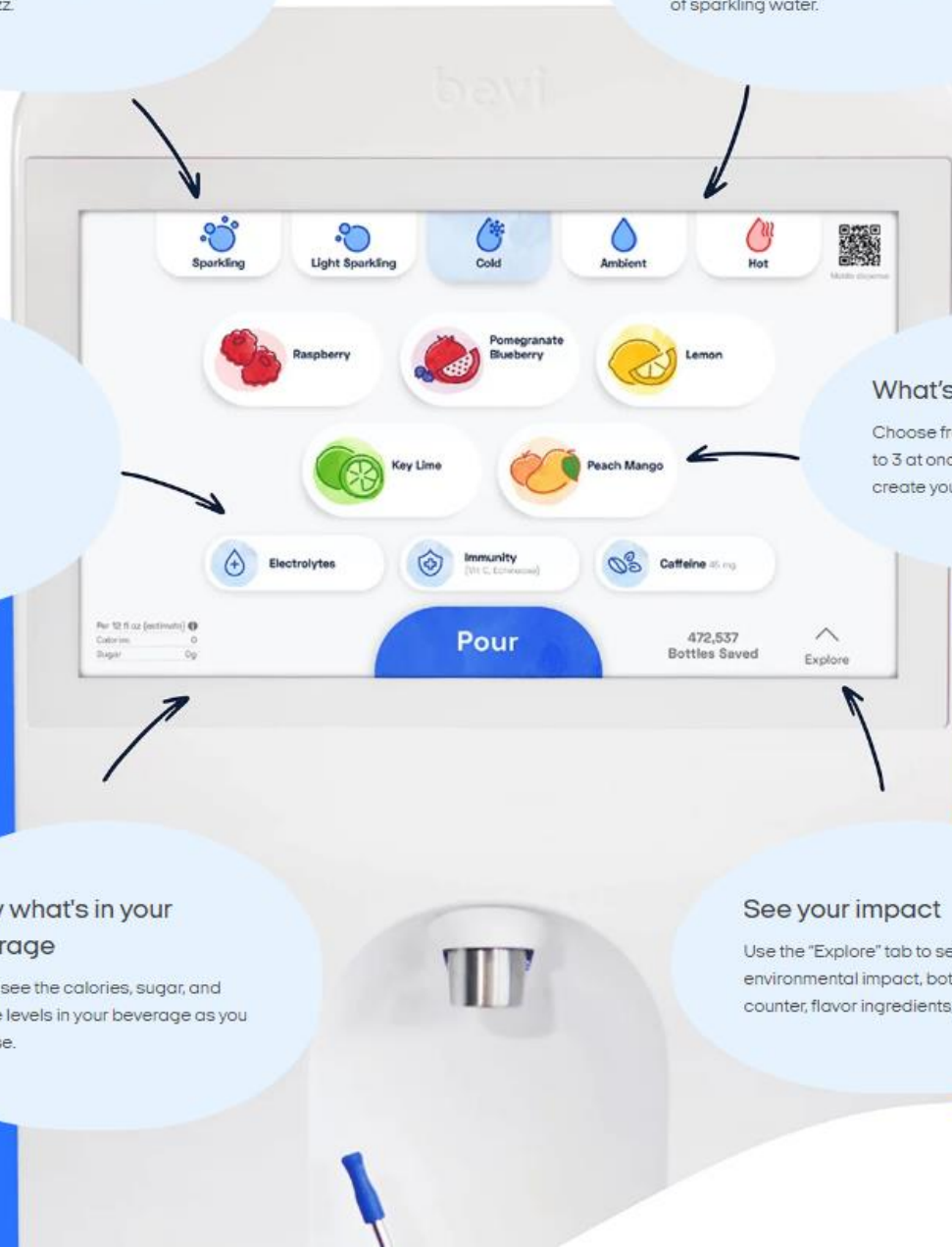
Choose from over 12 natural flavors, mix up to 3 at once, and adjust flavor strength to create your custom combination.

Know what's in your beverage

Quickly see the calories, sugar, and caffeine levels in your beverage as you dispense.

See your impact

Use the "Explore" tab to see your environmental impact, bottles saved counter, flavor ingredients, and more!



Bevi – Spec's

Different flavors of Bevi

We are constantly searching for the best-tasting flavors out there. Speak to your Bevi contact if there is a flavor below that you'd like to try.

Please check www.bevi.co for the latest list.



Refill station

Our machine accepts any container. With our single-nozzle design and LED lighting, filling up is clean and easy.

Touchscreen dispense

This is where a user selects their custom drink: still, sparkling, flavored, or not.

Water/power supply

- Standard 3-prong US 120V electrical outlet, draws less than 9 amps.
- 3/8" outer diameter water line.

Specifications

Dimensions	66"h x 16"w x 21.25"d
Weight	300 lbs.
Dispensing Height	12"
Water Options	Sparkling and cold still with and without added flavor and enhancements
Cooling Capacity	Unlimited
Hot Tank Capacity	0.79 gallon/3 liters
Rated Voltages/Frequency	115v/60Hz
Power Consumption	12 amps max



CO2 Supply for Sparkling Water

Sparkling Water Accessories

Cool, crisp, sparkling water is just moments away. Easily add a refillable CO2 tank with a regulator and you're ready to experience the endless bubbly refreshment that is the fastest growing trend in cold beverages!

CO₂ Tanks

- 14.5oz Soda Pro or Soda Stream
Carbonates up to 250 – 8oz Glasses (Approx. 1 cent per ounce)
Ion Touch Series and Soda Stream Systems Only
- 10 lb. CO₂ Aluminum Cylinder
Carbonates up to 3000 – 8oz Glasses (Approx. 0.3 cents per ounce)
Ion 900 Series, Ion Touch Series, Follet and Bevi Systems

CO₂ Regulator

Includes Wrench and Pressure Gauge.

CO₂ Cylinder Deposits

Soda Stream \$19.00

10lb Cylinder \$100.00

Deposits are charged upon installation



Under Counter Drink Stations

Water Cooling and Filtration units that are out of sight and water is dispensed at the sink via a separate faucet.

Under counter installations

Each under counter chiller is installed with a standard faucet.
Designer faucets are available.



Standard Feature Faucets \$75.00 each



Tomlinson Designer Faucets \$80-\$180 each



Tomlinson Contemporary Faucets \$80-\$180 each






Under Counter – B&O

t1

Minimal contemporary design,
maximum convenience and performance.

Durable and discreet, the T1's compact and flexible design can be installed directly into a countertop or placed above a sink, for the ultimate in filtered-water convenience.

At a glance.

Water options	 Chilled Sparkling Ambient
Configuration	 Integrated tap
Colour	 Black Steel
System	ProCore® Powerful and compact, energy-efficient modular system. DryChill® Rapid and hygienic, efficient chilling technology.
Technology	DeepSparkle® Sparkling water with long-lasting fizz Viovand® (optional) Chemical-free, eco-friendly integrated UVLED purification.
Hygiene	Totality® Filtration and hygiene assurance with Biomaster®.
Accessories	T1 Drip Tray Complementary circular tray for sinkless countertop integration.

Convenient and compact.

For complete convenience, the T1 can be mounted over a sink or paired with a discreet drip tray and placed directly into a countertop. Easily installed with a plug-and-play system, the illuminated control panel is seamlessly integrated into the body of the tap, providing versatile access to sparkling, chilled and ambient filtered water, making it fast and easy to refill bottles and glasses with refreshing, great-tasting water.

Confidently clean water.

Totality® is our 5-step methodology to achieving pure, healthier, premium water. Providing hygiene assurance in every pour, Totality® reduces sediment, odors, chlorine and microplastics, for freshly-filtered water that is safe to drink and tastes clean, crisp and fresh.

For complete peace of mind, select Viovand® enhanced UV-C purification. The ultraviolet LED technology provides eco-friendly, chemical-free sterilization to reduce bacteria and viruses.

Powerful and energy-efficient.

Designed and built in the UK, the T1 is powered by our exclusive, compact, modular ProCore® system with discrete ventilation. The integrated DryChill® airless, rapid cooling technology delivers the ultimate in hygiene and performance, reducing the risk of contamination and ensuring every glass delivers perfectly chilled, fresh-tasting water.

Bottleless water for every environment.

Designed with premium aesthetics for hard-working environments, the T1 features an easy-to-clean Fynil® finish and touch panel with antimicrobial silver ion protection. Refill with ease and eliminate the need for single-use plastic bottles, so you can hydrate with a conscience that is as clear as your water.

Sophisticated and versatile, suitable for both over-sink or sink-less environments.



Under Counter – Oasis R1

Oasis R1 Under counter chillers

The **Oasis R1P** water chiller will produce chilled water at a rate of approximately 1 gallon per hour. It has a stainless steel storage tank and is certified to NSF/ANSI Standard 61 Annex G (lead-free). The R1P is air-cooled and designed to fit conveniently under a sink. Upgrade from your old water chiller and get switched to the Oasis R1P Water Chiller for cooler, more refreshing drinking water.

NSF Certified. The Oasis R1P Water Chiller is certified by NSF to meet Standard 61 Annex G for lead-free content. NSF Certification is a third-party certification that assures this product complies with strict standards for quality and safety.

Certified Lead-Free. The Oasis R1P Water Chiller is certified lead-free according to the ANSI Standard 61 Annex G and uses 1/4" O.D. stainless steel tubing connections, and a powder-coated galvanized steel cabinet with plastic front.

Compact Air-Cooled Design. This chiller is made to fit and install easily under your sink, making it an easy and convenient appliance to have in your kitchen.

It also comes with a 4 ft. insulated power cord with NEMA 5-15 plug for easy installation.



Water Filtration Solutions

Benefits of Commercial Water Filters

Some of the many benefits of maintaining high-quality water through the use of Omnipure's line of commercial filters include:

Eliminate Energy Inefficiencies with Scale-Reduction Filters

It is a well-known fact that hard water can wreak havoc on commercial kitchen equipment. Scale deposits can cause frequent clogs and lead to unnecessary downtime. A quality commercial water filter will fight lime-scale buildup, eliminating time-consuming breakdowns and expensive repairs.

Less Equipment Maintenance

Many of our filters only take a few seconds to change, with no need for a service call or a costly disruption to regular business. Harmful contaminants can jeopardize your plumbing system, leading to expensive repairs. Commercial filters will keep kitchen equipment running efficiently while providing a steady source of clean water.

Reduction of Suspended Solids

One way of gauging water quality is to test the amount of microscopic solid particles that remain suspended in the water. A commercial water filter will reduce the number of suspended solids, resulting in a better appearance and taste.

Removal of Municipal and Groundwater Contamination

Many impurities such as VOCs, THMS, pesticides, chlorine, herbicides, and bacteria in water come from municipal and groundwater contamination. Using a commercial water filter will allow for contaminant-free water with no smell and tastes good every time.

Greater Treatment Efficiency

Commercial water filters can accommodate a much greater capacity than residential filters, offering greater treatment efficiency. Further, water filtration systems can be added to existing systems to further boost efficiency.

Chlorine-Free and Chemical-Free Filtered Water

Having high-quality water that is safe for consumption is essential in foodservice operations. Not only beverages, but many foods, require chemical-free water to ensure a proper taste. Omnipure filters will remove chlorine, leaving water fresh and better tasting.



NSF Certified Water filters

From a Company you can trust

Omnipure Filter Company is a leader in the water filtration industry. They are known for creating the first small disposable inline carbon filter that revolutionized the industry. The company's simple concept of providing "better-tasting water" led to the creation of the best inline water filter in the world. Omnipure products are proudly made in Caldwell, Idaho USA and distributed worldwide. All Omnipure filter bodies are made with virgin, high-impact polypropylene, which is ideal for use in applications where sanitary conditions are required. All materials used in the construction of their filters are NSF and/or FDA-approved, ensuring that the products meet the highest standards for quality and safety.

Omnipure 1250

\$19.95/Month

Flow Rate	0.5 gpm
Maximum Operating Pressure	125 psig
Operating Temperature	35 to 100 °F
Rated Capacity	1,250 gal/6 Months
Reduction Claim	Chlorine, taste, color, and odor reduction with scale/corrosion inhibitor
Standards	NSF (National Sanitation Foundation)



Omnipure SXP-10TAR -

\$29.99/Month

Combination Filtration: A cutting-edge water treatment solution that pairs premium Catalytic Carbon Block filtration (≤ 5 microns) with revolutionary FILTERSORB® SP3 technology.

Removes: Chlorine, chloramines, sediment, odors, and harmful by-products while preventing and removing scale buildup (up to 26 grains) using eco-friendly, chemical-free NAC technology. Unlike traditional systems, it enhances water quality without altering pH or TDS levels, retaining essential minerals for health and taste.

Applications: Perfect for residential, commercial, and industrial applications, it safeguards plumbing, ice machines, coffee and beverage equipment, combi-ovens, misters, and more—boosting efficiency and extending appliance lifespan.

High-Capacity Performance: Filters up to 6000 gallons with a flow rate of 1 gallon per minute (Capacity, 22,000+ liters, 0.5GPM) for long-lasting and efficient operation.



The WOWRO 50 System with Leak Detection Base And The WOWRO 180 System with Leak Detection Base



NSF/ANSI 58 Standard Requirements

Influent Challenge Concentration (mg/l) ¹	Maximum Allowable Product Water Concentration (mg/l) ¹	Average % Reduction
Nitrate (as NO ₃) 26.9 + 10%	9.2	96.5
Nitrite (as NO ₂) 2.8 + 10%	.01	96.4
Arsenic (Pentavalent) 48.0 + 10% (ppb)	5.03 (ppb)	96.2

pH: 7.5 +/- 0.5, Temp: 25 +/- 1 degree C, TDS: 740ppm, PSI: 40lbs
Turbidity (<1 NTU): 0.15

Actual Test Results

1. Unless otherwise indicated.
2. Average based upon actual test data.
3. This system has been tested for the treatment of water containing pentavalent arsenic (also known as As(V), As (+5), or arsenate) at concentrations of 48.0/ppb or less. This system reduces pentavalent arsenic, but may not remove other forms of arsenic. This system is to be used on watersupplies containing a detectable free chlorine residual at the system inlet or on water supplies that have been demonstrated to contain only pentavalent arsenic. Treatment with chloramine (combined chlorine) is not sufficient to ensure complete conversion of trivalent arsenic to pentavalent arsenic. please see the Arsenic Facts section of Performance Data Sheet for further information.



This WOWRO 50 RO System is Certified by IAPMO R&T against NSF/ANSI 58 for the reduction of Claims specified in the Performance Data Sheet

Efficient

The WOW RO™ Water-on-Water™ reverse osmosis system, with its unique patented/patent-pending technology, sleek design and compact size is a highly efficient and hassle-free POU (point of use) RO system on the market today. It is also made entirely in the USA with certified materials and components. Our proprietary system, protected by multiple patents pending and issued, implements WOW RO™ Water-on-Water™ reverse osmosis technology, which allows us to operate the RO membrane with 'zero back pressure' the way it was tested. This ensures that every client's results are consistent with all laboratory testing. Most RO test results are based on ideal conditions, which are typically unrealistic to the locations being installed.

Fast-forward flushing membrane – As water is dispensing into your glass, an equal volume of water rushes across the front surface of the membrane, scrubbing the membrane clean. When the customer stops dispensing water, the Wow RO™ CPU valve shifts into water make up, slowing the flow across the membrane to a normal concentrate flow. This two-speed action extends the life of the membrane and allows the system to operate with a 1 to 1 ratio for an approximate waste ratio of 2 to 1, or 27.5%-33% efficiency. With this minimal flow rate and the enhanced zero back pressure performance, the WOW RO™ system can function and operate with our two-stage pre-filter.

Monthly Rates -

WOW-50GPD \$30.00

WOW-180 GPD \$45.00

Gold Seal Reverse Osmosis - \$40.00/month

The Water Quality Association (WQA) Gold Seal represents the most credible and independent testing and validation entity in the water industry. The WQA's Gold Seal represents quality assurance through comprehensive testing and continuous research and evaluation of water treatment technologies.



The PuROTwist 4000 REVERSE OSMOSIS

semi-permeable membrane rinses contaminants to the drain. High quality, filtered drinking water is produced and conveniently stored in a sealed tank. The PuROTwist 4000 lead-free faucet easily delivers an abundant supply of clear, clean, and fresh drinking water to you and your colleagues.

Stage 1. *5 Micron Sediment Filter* : Removes dirt, sediments, sand, and other physical particles.

Stage 2. *Pre Carbon Filter* : Provides protection to the RO membrane from free chlorine and sediment.

Stage 3 *Reverse Osmosis Membrane* : Membrane reduces a high percentage of dissolved inorganics.

Stage 4 *Post Carbon Filter* : A final polishing process that enhances and clarifies your drinking water.

Gold Seal Reverse Osmosis - \$40.00/month

PuROTwist PT4000T50 Quick Change Four Stage Reverse Osmosis System is designed to produce crystal-clean, healthy, and contaminant-free water for your daily needs. The encapsulated 50 TFC RO membrane and filters provide quick and easy replacement. Installed under the kitchen sink the RO System will provide up to 50 gallons a day of highest quality and purity water for drinking and cooking.

Rental includes:

Stage #1: 5 Micron Sediment Filter (Q5605)
Stage #2: Carbon GAC Prefilter (Q5633)
Stage #3: TFC RO Membrane (TQ56-50FQ)
Stage #4: Carbon GAC Postfilter (Q5633)
4 Gallons Storage Tank
Lead-Free Non-Gap Faucet

Replacement Schedule

Annually
Annually
3 Years
Annually
5-year Inspection
10-year Inspection

Condition for Operation:

Operating pressure min/max: 30 / 100 psi
Temperature: 40°F to 100°F (4°C to 38°C)
pH Range: 3.0-11.0
Max supply TDS: 2000 mg/L
5 Years warranty on the PT4000T50-SS NA RO System
5 year warranty on NSF 3.2 gallon steel storage tank
1 year warranty on RO membrane

Recommended Service

Replacement of all filters - Annually
Replacement of TFC RO Membrane 50 GPD
SKU: PT4000T50-RK



Purotwist WQA Gold Seal Certified Reduced Contaminants

Barium
Cadmium
Lead
Copper

Chromium III & VI
Radium 226/228
Selenium
TDS

Sizing Chart for Water Filters replacement

Number of Staff using the water cooler	Total Liters Consumed daily Based on drinking *750ml	Apprx. liters per Anum consumed *250 workdays	Suggested Water Filter	Replacement schedule based on capacity.	Recommended Preventative Replacement and Service Plan
05	3.750	938	Omnipure 1250	5 Years	Annually
25	18.750	4688	Omnipure 1250	Annually	Annually
50	37.500	9375	Omnipure SXP-10TAR	Annually	Annually
75	56.250	14063	Omnipure SXP-10TAR	Annually	Annually
100	75.000	18750	Omnipure SXP-10TAR	Annually	Annually

*Daily consumptions are based on 3 - 250ml servings per employee.

*Volume in liters consumed each year are based on 50, five day workweeks per employee

Number of Staff using the water cooler	Total Liters Consumed daily Based on drinking *750ml	Apprx. liters per Anum consumed *250 workdays	Suggested Reverse Osmosis Water Systems	TFC Membrane Replacement	Carbon filter and sediment filter Replacement
05 - 50	5L - 30L	7500	WOW-50GPD	3 Years	Annually
50-100	25L - 50L	10000	PURERO TWIST	3 Years	Annually
100 +	50L - 100L	20000	WOW-180GPD	3 Years	Annually

Our Services

Water Line Management

Office and food service operations are expanding their beverage menus, which leads to the use of more equipment than ever before. This means that facilities teams face new challenges in managing the increasing number of beverage lines and water lines that come with this equipment. They also need to spend more time identifying and tracing these lines during service.

In many offices, lunch rooms, and corporate break areas, it is becoming increasingly common to find issues related to the beverage lines. These may include new lines getting tangled up with old ones, poor or no identification of the lines, lack of shut-off valves on the lines, and the use of hard-plumbed lines with little or no flexibility. In some cases, there may be multiple tubing types and sizes being used, which can create turbulence and further complicate the situation.

This can lead to:

- Time needlessly spent trying to identify lines and trace them back to the equipment during an emergency.

- More time spent on a project than required or desired, leading to increased cost if it can't be billed back to a vendor should there be a water escape.

The Coffee Connection offers John Guest quick-connect plumbing fittings and ID tags to manage water lines easily. Our system cleans up tangled water lines, organizes them for improved appearance and maintenance efficiency. It reduces identifying and tracing lines time and quickly shuts off lines for servicing. It also reduces equipment downtime during servicing and can be easily modified to meet changing plumbing requirements. The system is flexible, expansion-capable, and has a minimal impact on the space and function of your breakroom.

Water Filter Management

How often should my cartridges be changed?

In order for our filters to perform as represented and to provide the best quality water possible, it is essential that filters be replaced periodically. We recommend replacing your filter cartridge when capacity is reached, flow rates are restricted, and no less than every two years. The frequency of filter changes depends upon your water quality and your water usage. For example, if there is a lot of sediment and/or particles in your water, then you will have to change your filters more frequently than someone does with little to no sediment. Be sure to replace your filters whenever you notice a decline in the performance, whether it is a drop in flow rate and/or pressure or an unusual taste in the water.

The Coffee Connection offers scheduled services and will monitor your filter in multiples of 6 months based on the sizing of your account. If your employee base has grown tremendously contact us so that we can resize your usage to ensure appropriate replacement schedules.

Why do my cartridges seem to slow the flow of water each month?

Because our cartridges are designed to remove contaminants and particles from the water, the cartridges will eventually plug as particles and contaminants are being captured. Therefore, plugging indicates that the cartridges are working efficiently and are removing contaminants.

Why does the service technician flush a bunch of water down the drain when installing my filter?

All carbon-based filters need to be flushed to remove any excess carbon fines that are inside the cartridges. New cartridges are filled with air; therefore, flushing removes the air from inside the cartridges and replaces it with water. The flushing process will allow any carbon-based cartridge to function at optimum levels without affecting any equipment that may be attached.

Equipment Selection Form

Equipment Selection Form.

Please detail below your water cooler and filtration selections.

Customer Name:

Address:

Contact Name:

Phone #:

Designation	Manufacturer	Model	Monthly Rental	QTY	Actions
Under Counter	Borg & Overstrom	T1	\$350.00/12 \$250.00/36		Select water filter
Under Counter	Oasis	R1	\$ 25.00		Select water filter
Designation	Manufacturer	Model	Monthly Rental	QTY	Actions
Free Standing	Vertex	BW5281 Cool and Cold	\$ 15.00		Select water filter
Free Standing	Vertex	BW5280 Hot and Cold	\$ 20.00		Select water filter
Designation	Manufacturer	Model	Monthly Rental	QTY	Actions
Counter Top EXEC	Vertex	PWC 450/900	\$ 30.00		Select water filter
Multi Function	Lavit	Cold Still / Cold Sparkling	\$ 65.00		Select water filter
Volume Rated					
Water filtration	Omnipure	1250+ Gallons	\$ 19.95		Select dispenser
Water filtration	Omnipure SXP-10TAR	6000+ Gallons	\$ 29.95		Select dispenser
Water filtration R.O.	WOW / PURETWIST	WOW-50/ PureRO / WOW-180	\$ 30/40/45		Select dispenser
Water Softening	Omnipure	ELF 700+ grains	\$ 29.95		Select dispenser
All in One Systems contain the water filtration internally and the fixed cost includes both the Appliance and the water filtration system.					
Multi Function	ION TS 400	Hot/Cold/Ambient/Sparkling	\$ 105.00		Water Filter included
Multi Function	BEVI – G2	Full Sized Stand Up – 8 selections	\$349.99/24 - \$299.99/48		Water Filter included
Multi Function	BEVI – Counter Top	Counter Top Unit – 4 Selections	\$299.99/24 - \$149.99/48		Water Filter included
Labour, Products and Ongoing Maintenance					
CO2 Supply	SodaPro 14.5oz Cylinder	Beverage Co2 – 300 Cups	\$ 25.00 / Exchange		Deposit \$20.00
CO2 Supply	Lavit 24oz Cylinder	Beverage Co2 – 300 Cups	\$ 40.00 / Exchange		Deposit \$35.00
CO2 Bulk Supply	10lb Cylinder	Beverage Co2 – 3000 Cups	\$ 175.00 / Exchange		Deposit \$200.00
Installation	TCC	New / Move / Additional	Included in rental fee		No charge
Cleaning / Maintenance	TCC	As per Manufacturer	Included in rental fee		No Charge
Cartridge Replacement	TCC	As per Manufacturer	Included in rental fee		No Charge

Contact us by phone or email your selection to clientservices@thecoffeeconnection.ca

Calgary 403.269.5977

Red Deer 403.342.0303

Edmonton 780.438.5976

--All in one-- --Select Filter-- ---Select your dispenser---